

STAHL'S

a GroupeSTAHL company

HEAT PRESSES & ACCESSORIES



BUY FROM
MANUFACTURER
STAHL'S

Heat Presses 2

Clam Basic Series
NEW: Clam Basic Cap 3

Sprint® MAG XS (15 cm x 15 cm)
Sprint® MAG S (25 cm x 38 cm)
Sprint® MAG L (40 cm x 40 cm)
Sprint® MAG XL (40 cm x 50 cm) 4

Sprint® MAG Cap (9 cm x 16 cm)
Sprint® MAG Hover (40 cm x 50 cm) 5

MAXX™ Clam Series 6

MAXX™ Cap 7

Hotronix® Fusion (40 cm x 50 cm)
Hotronix® Air Fusion™ (40 cm x 50 cm) 8

Hotronix® Dual Air Fusion™ (40 cm x 50 cm) 9

Accessories 10-13

Heat Press Checklist 14

Discover our complete range on www.stahls.de:

A wide range of digital printable CAD-COLOR® materials.

A wide range of plottable CAD-CUT® materials.

We have the right solution for your application:

If Cotton, Poly/Cotton blend, Polyester, Nylon or Lycra - we have the most suitable CAD-COLOR® and CAD-CUT® materials!



HOTRONIX® / Sprint®

STAHL'S Hotronix® / Sprint® / MAXX™ heat presses are the most accurate, innovative and technologically advanced heat press machines in the industry.

Hotronix® heat presses continue to dominate in design, outperform in comparison tests and outlast the competition in all areas. Companies all over the world take part in distributing heat seal equipment manufactured by Stahl's Hotronix® because it is reliable, accurate and easy to use.



Research - Testing - Manufacture

STAHL'S have their own worldwide manufacturing plants, maintaining the highest standards of quality at all times.

Testing is of paramount importance to ensure quality and consistency of product. STAHL'S testing procedures ensure customers have tried and tested products every time.

STAHL'S continually invests in the latest technology and production processes in all divisions to offer our customers the best products in the market, today and in the future. All our products are made from the highest quality materials and are easy to use.



Hotronix® Air Fusion™ Table Top



Hotronix® automatische Presse / Sprint® Mag



Ideal machine for beginners!

Clam Basic

An ideal machine for beginners or as a back-up machine. The machine has a digital display to set temperature and time and is easy to handle.

**Available in 28cm x38cm & 38cm x 38cm
40cm x 50cm**

Technical Specifications:
1000 Watt / 1750 Watt, 220/240 Volt

Shipping Dimensions:
82cm L x 50cm W x 52cm H
Shipping Weight:
24,5 kg / 30 kg



- Ideal for beginners or as a back-up machine
- Easy handling
- Digital display to set temperature & time
- Nonstick coated upper platen
- UL, ULC, CE and RoHS compliant
- 2 years warranty
- Made by STAHL'S' in China

Ideal machine for beginners!

Clam Basic Cap

An ideal machine for beginners or as a back-up machine. The machine has a digital display to set temperature and time and is easy to handle.

9 x 16 xm

Technical Specifications:
500 Watt, 220/240 Volt

Shipping Dimensions:
66cm L x 50cm W x 38cm H
Shipping Weight:
16 kg



- Ideal for beginners or as a back-up machine
- Interchangeable lower platen
- Easy handling
- Digital display to set temperature & time
- Nonstick coated upper platen
- UL, ULC, CE and RoHS compliant
- 2 years warranty
- Made by STAHL'S' in China



You won't find a more user friendly press!

Sprint® Mag Digital

These heat presses features automatic release without the use of an air compressor and magnetic assisted lock down for maximum pressure with minimal effort. This heat press also has fully digital time and temperature control and 999 seconds dwell time. The space saving clam shell design allows more room for multiple heat press machines, which helps to create an environment for maximum potential and production. The Auto Open Series 15cm x 15cm heat press / Sprint® Mag XS is ideal for printing smaller transfers such as labels, tags, sleeve logos and more.

15cm x 15cm

Specifications:
500 Watt, 4,5 Amp
Available in: 110 V or 220 V
Shipping Dimensions:
26cm L x 21cm B x 15cm H
Shipping Weight:
19 kg



- Patented, magnet assisted lockdown with automatic release
- Fully digital time and temperature control
- Live digital pressure display
- Twin Timer™ for two step applications with 999 sec dwell time
- 2cm thick nonstick coated upper platen
- Quick change of lower platen
- Wide opening for easy layout
- 30 years heating element warranty
- Patented, Over-the-Centre pressure adjustment
- UL/ULC/CE/RoHS compliant

28cm x 38cm

Specifications: 1750 Watt, 14,5 Amp
Available in: 110 V or 220 V
Shipping Dimension:
31cm L x 21cm B x 21cm H
Shipping Weight:
34 kg



40cm x 40cm

Specifications: 1750 Watt, 14,5 Amp
Available in: 110 V or 220 V
Shipping Dimension:
89cm L x 61cm B x 58cm H
Shipping Weight:
44 kg



40cm x 50cm

Specifications: 1750 Watt, 14,5 Amp
Available in: 110 V or 220 V
Shipping Dimension:
89cm L x 61cm B x 58cm H
Shipping Weight:
48 kg





Wide opening for easy layout!

Sprint® Mag Cap

This cap press features automatic release without the use of an air compressor and patented, magnet assisted lock down for maximum pressure with minimal effort. The cap press also has fully digital time and temperature controls. The space saving clam shell design allows more room for multiple heat press machines, which helps to create an environment for maximum potential and capacity.

9cm x 16cm

Specifications:
500 Watt, 4,5 Amp
Available in: 110 V or 220 V
Shipping Dimension:
66cm L x 50cm B x 38cm H
Shipping Weight:
19 kg



- Patented, magnet assisted lockdown with automatic release
- Fully digital time and temperature control
- Live digital pressure display
- Twin Timer™ for two step applications with 999 sec dwell time
- 2cm thick nonstick coated upper platen
- Quick change of lower platen
- Wide opening for easy layout
- 30 years heating element warranty
- Patented, Over-the-Centre pressure adjustment
- UL/ULC/CE/RoHS compliant

Ideal for use with direct to garment printers!

Sprint® Mag Hover™

The Hotronix® Hover Press™, a patent pending heat press, manufactured exclusively by Stahl's Hotronix®. The Hover Press™ includes digital time, temperature and pressure displays and allows the operator to set the press for two functions: hover or pressure. The Hotronix® Hover Press™ also features the new Twin Timer™ function, which allows the user to program two independent time settings, to count down any two-step process without resetting the timer.

40cm x 50cm

Specifications:
1750 Watt, 14,5 Amp
Available in: 110 V or 220 V
Shipping Dimension:
89cm L x 63cm B x 19cm H
Shipping Weight:
48 kg



- Patented, magnet assisted lockdown with automatic release
- Fully digital time and temperature control
- Live digital pressure display
- Twin Timer™ for two step applications with 999 sec dwell time
- 2cm thick nonstick coated upper platen
- Quick change lower platen
- Wide opening for easy layout
- 30 years heating element warranty
- Space saving clam shell design
- Patented, Over-the-Centre pressure adjustment
- UL/ULC/CE/RoHS compliant



Best value for your money!

The **MAXX™** series

By STAHL'S

MAXX™ Clam

Engineered and patented by the heat press experts, this complete digital line has a wide opening for perfect application of a variety of today's heat applied graphics. Both economical and portable, this press is also equipped with the industry's best warranty.

Available in following sizes:

28cm x 38cm

Specifications:
1000 Watt
Available in:
110 V or 220 V
Shipping Dimensions:
31cm L x 21cm B x 21cm H
Shipping Weight:
34 kg



- Digital time & temperature readout
- Nonstick coated heat platen
- HRPO laser quality steel framework
- Smooth shock opening
- Scratch resistant, baked on powder coat finish
- Interchangeable lower platens
- UL/ULC/CE/RoHS compliant
- 30 years heating element warranty

38 cm x 38cm

Specifications:
1750 Watt, 14,5 Amp
Available in:
110 V or 220 V
Shipping Dimensions:
89cm L x 61cm B x 58cm H
Shipping Weight:
44 kg



40cm x 50cm

Specifications:
1750 Watt, 14,5 Amp
Available in:
110 V or 220 V
Shipping Dimensions:
89cm L x 61cm B x 58cm H
Shipping Weight:
48 kg





Best value for your money!

The **MAXX**TM series

By STAHL'S

MAXXTM Cap

Engineered and patented by the heat press experts, this complete digital line has a wide opening for perfect application of a variety of today's heat applied graphics. Both economical and portable, this press is also equipped with the industry's best warranty.

9cm x 16cm

Specifications:

500 Watt

Available in:

220 V or 240 V

Shipping Dimensions:

66 cm x 38 cm x 51 cm

Shipping Weight:

18 kg



- Digital time & temperature readout
- Nonstick coated heat platen
- HRPO laser quality steel framework
- Smooth shock opening
- Scratch resistant, baked on powder coat finish
- Interchangeable lower platens
- UL/ULC/CE/RoHS compliant
- 30 years heating element warranty



Great for high volume!

Hotronix® Fusion™

Breakthrough Heat Press Technology: the new Hotronix® Fusion™ from STAHL'S'. The world's first heat press designed with Touch Screen technology and dual function: get the benefits of both, a swing and draw style - all in one press!

40cm x 50cm

Available in:
1750 Watt, 110 V/220 V,
Shipping Dimensions:
89cm L x 61cm B x 56cm H
Shipping Weight:
60 kg

- Exclusive EZ-touch screen technology
- Live digital time, temperature and pressure readout
- Opens with Swing or Draw motion, fits the way YOU work
- Innovative EZ-On platen design
- Multiple time settings make applications a breeze
- 2cm thick platens for better heat retention
- Easy to install interchangeable platens
- Program & store frequently used applications
- Special cast aluminum frame
- UL/ULC/CE/RoHS compliant

FUSION™



Innovative Design

Great for high volume!

Hotronix® Air Fusion™



40cm x 50cm

The Hotronix® Air Fusion™ (requires an air compressor) is an auto-open, auto-swing heat press, with patented, innovative features designed to increase production volume and decrease operator fatigue. Excellent for high volume and specialty decorators or anyone who is looking for the easiest, most efficient way to heat print on substrates.

40cm x 50cm

Available in:
2250 Watt, 220/240 Volt
Shipping Dimensions:
121cm L x 101cm W x 147cm H
Shipping Weight:
245 kg

**Also available as
Air Fusion™ Table Top:**



- Auto Open, Swing Away Design
- Auto Adjust Pressure™
- Touch screen technology
- Live digital time, temperature and pressure readout
- Adjustable Stand, economically sound: 94 cm - 112 cm
- Threadybility™: EZ-On Platen design
- Multiple Time settings
- Quick Change, easy to install interchangeable platens
- Available in eight languages
- 3/4" thick, nonstick platens
- High pressure: up to 8,27 bar (120 psi)
- UL, ULC, CE and RoHS compliant
- Premium warranty



Two platens are better than one!

Hotronix® Dual Air Fusion™

It all presses down to performance. Our research has shown that the Dual Air Fusion is 50 percent more productive than a standard swing-arm heat press. You would need two heat presses to meet that same level of output, costing you more in energy, floor space and personnel. With the Dual Air, you get the additional performance without the additional costs. Combine this type of versatility with our wide selection of Quick Change platens and our optional laser alignment system, and it's easy to see why the Dual Air Fusion™ is the ultimate solution for high and medium volume decorators.



DUAL AIR FUSION™



- Two platens 40 x 50 cm
- Position Based Recipe technology
- Auto Adjust Pressure™
- Touch screen technology
- Live digital time, temperature and pressure readout
- Threadybility™: EZ-On Platen design
- Multiple Time settings
- Quick Change, easy to install interchangeable platens
- Available in eight languages
- Separately available: Laser-Guided Performance
- 3/4" thick, nonstick platens
- High pressure: up to 8,27 bar (120 psi)
- UL, ULC, CE and RoHS compliant
- Premium warranty

Separately available:

Laser Guided Performance:





Heben Sie Ihre Transferpresse auf den nächsten Level!

Hotronix® Caddie™

Take your clam press to the next level!

Make your heat press more flexible with the new Heat Press Caddie™ .

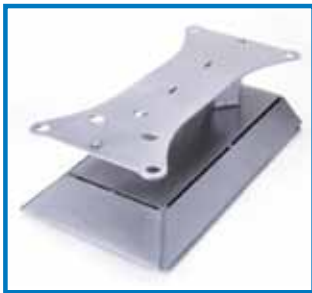
This adaptable stand adds industry-exclusive Threadability™ to your STAHL'S' heat press:

- **You'll never have to worry about fitting different sized apparel over your heat press again**
- **Print the front and back of your apparel without redressing the platen, cutting your production time by 40 percent!**
- **Adjustable: raise or lower the height of your heat press for an ergonomic heat printing environment fit for all heat printers**
- **With self-leveling casters, you'll be able to maneuver your heat press easily**

Adapted for the following STAHL'S' heat presses:

- Sprint® Mag Serie 28x38 cm, 40x40 cm, 40x50 cm
- Sprint® Mag Hover 40x50 cm
- Maxx™ Serie 28x38 cm, 38x38 cm, 40x50 cm

Also available as Counter Caddie™!



Technical Details:

Shipping Dimensions: 84 cm x 84 cm x 31 cm

Shipping weight: 27 kg

Heat Press sold separately.

Hotronix® Caddie™ Shelves

Keep supplies close at hand no matter where you are.

These sturdy adjustable shelves keep heat transfer materials, transfers, blank garments, or accessories within easy reach. Designed to attach to the Heat Press Caddie™ or Air Fusion® pedestal stand, they allow you to create a self-contained workspace whether in your shop or at a remote event.

Each tray can be rotated into landscape or portrait orientation to suit your needs.

- **A weight limit of 4,5 kg per shelf is recommended.**
- **Actual Weight: 11,5 kg**
- **Tray Size: 33 cm wide x 46 cm long**
- **Width: 15 cm (fully extended)**
- **Easy to assemble**

Technical Details:

Shipping Dimensions: 36 cm x 51 cm x 16 cm

Shipping weight: 11,5 kg

Hotronix® Caddie™ sold separately.





Interchangeable Platens

Available for all Heat Presses:

- ø 18 cm (round)
- 15 cm x 25 cm
- 20 cm x 25 cm
- 40 cm x 40 cm
- 40 cm x 50 cm

Sleeve/Leg:

- 15 cm x 61 cm

Shoe Platen:

- 38 cm x 15 cm x 10 cm

Umbrella Platen:

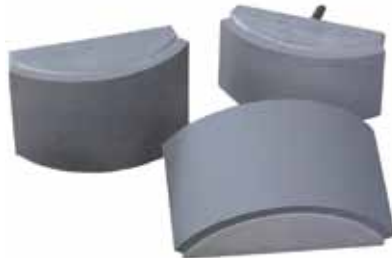
- 40cm x 40cm, 40cm x 50cm



Interchangeable platens allow you to heat apply graphics to a wide variety of garments and accessories.

For all Cap Presses

- 6,0 cm x 8,0 cm
- 7,0 cm x 16,0 cm
- 7,5 cm x 14,5 cm
- 9,0 cm x 16,0 cm
- 10,0 cm x 16,0 cm
- 10,0 cm x 22,0 cm



Allows greater versatility when working with a variety of cap styles.

Heat Printing Pillow

Available in the following sizes:

- 41 cm x 51 cm
for oversized shirts
- 25 cm x 25 cm
for youth shirts
- 15 cm x 20 cm
for shorts and shoulders
- 13 cm x 46 cm
for sleeves and legs



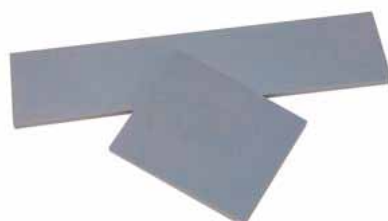
Prevent marks on transfers and lettering with these 2cm foam core heatprotecte pillows. Use with V-necks, near heavy seams, zippers or buttons and as inserts for mesh and reversible jerseys.

Also available in a set (one of each size)

Print Perfect Pad

Erhältliche Größen:

- approx. 20 x 25 cm
- approx. 13 x 15 cm
- approx. 9 x 40 cm



- Designed to elevate your print area and still provide a solid surface for even pressure. Ideal for working around buttons, zippers, and seams.



Non Stick Quick Slip Pad Protector

Available in the following sizes:

28 cm x 38 cm

38 cm x 38 cm

40 cm x 40 cm

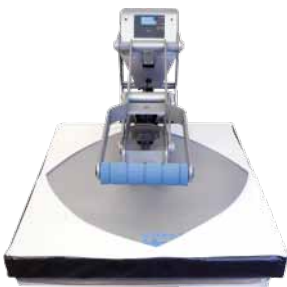
40 cm x 50 cm



- Fits snugly over the lower platen, making it easy to slide garments off and on while reducing wear and tear
- Easy to clean
- Sublimation colour does not adhere

For heat platen, available in the following sizes:

40 cm x 50 cm



- Fits snugly over the heat platen, reducing wear and tear
- Easy to clean
- Sublimation colour does not adhere

Cover Sheets

Cover sheets are used to keep graphics from sticking to the heat press platen, and to give graphics different textures and finishes.

Cover Sheet Reusable:

46 cm x 49 cm



- Particularly tough, dirt can be easily removed
- Sublimation colour does not adhere
- Achieve a slightly shiny finish and slight texture

Grip Cover Sheet:

approx. 46 cm x 48 cm

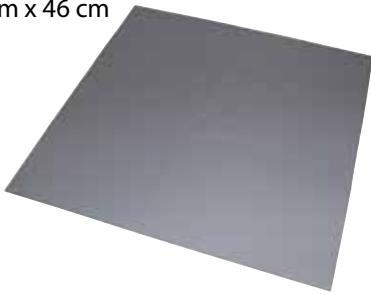


- Wax coated, not to be used on sublimation-dyed polyester
- Achieve a matte finish in most cases
- Each side can be used multiple times



Grip Rubber Cover Sheet:

46 cm x 46 cm



- This high quality silicone pad retains heat very well and is a perfect aid when heat applying transfers
- Especially suited for heat applying CAD-CUT® materials
- Achieve a slightly textured surface

Thermo Tape / Dispenser



Thermo Tape:

- To affix transfers onto your textile
- Extreme heat resistant material
- Ideal for cups, garments, etc.

Dispenser

- Durable construction
- Slip resistant, with rubber base to provide stability

Heat Platen Cleaner



- Keep your heat platen free from dirt

Heat Eraser



- Cleans the lower and upper platen
- Quickly disperses heat from hot transfers
- Ideal for cooling letters before you remove the cover sheet

Stahls' EZ Weeder



- This handy tool lets you easily weed CAD-CUT® and CAD-COLOR® graphics.



Heat Press Checklist

	Clam Basic 28cm x 38cm; 38cm x 38cm; 40cm x 50cm * digital pressure readout	MAXX™ Clam 28cm x 38 cm; 38cm x 38cm; 40cm x 50cm	MAXX™ Cap / Clam Basic Cap 3cm x 16 cm	Sprint® Mag Digital & XS 28cm x 38 cm; 40cm x 40cm; 40cm x 50cm; 15cm x 15 cm	Sprint® Mag Cap 9cm x 16cm	Hotronix® Hover 40cm x 50cm	Hotronix® Fusion™ 40cm x 50cm	Hotronix® AirFusion™ / Hotronix® Dual Air Fusion™ 40cm x 50cm
Features								
Patented, magnetic auto open feature				X	X	X		
Patented, magnet assisted lock down				X	X	X		
Digital controls for temperature and time with auto release	X	X	X	X	X	X		X
Digital time, temperature and pressure controls	X*	X	X	X	X	X	X	X
Twin Timer™ for programming two independent time settings				X	X	X	X	X
Auto reset timer and LCD readout							X	X
Automatic timer	X	X	X	X	X	X	X	X
Platinum RTD heat sensor	X	X	X	X	X	X	X	X
10 preset programs							X	X
Push button controls / EZ touch screen (only Fusion™)	X	X		X		X	X	X
Patented, Over-the-Centre pressure adjustment	X	X		X		X	X	X
Under centre pressure adjustment			X		X			
Generates maximum pressure	X	X	X	X	X	X	X	X
Built-in pressure sensor				X	X	X	X	X
2cm thick Teflon® coated upper heat platen	X	X	X	X	X	X	X	X
Teflon® coated heater - stress relieved to prevent warping		X	X	X	X	X	X	X
30 years warranty for heat platen (heating element warranty)		X	X	X	X	X	X	X

All technical information and recommendations are based on tests we believe to be reliable. However, we cannot guarantee performance for conditions not under manufacturer's control. Before using, please determine the suitability of the product for its intended use. The user assumes all risks and the liability of anything relating to the use of this product. The Seller's and manufacturer's only obligation shall be to replace such those particular quantities of the product proven to be defective by manufacturer.

CAD-CUT®, CAD-LAB, Pressure Sensitive Polly-TWILL, & Hotronix are trademarks & ® trademarks of GroupeSTAHL™ with one or more patents or patents pending. © Stahls' Europe™ 2011 - All International Rights Reserved



Europe

STAHL'S Europe GmbH • Dieselstraße 62 • D-66763 Dillingen
info@stahls.de • www.stahls.eu
Tel.: +49 (0)6831 97330 • Fax: +49 (0)6831 973345

STAHL'S
a GroupeSTAHL company